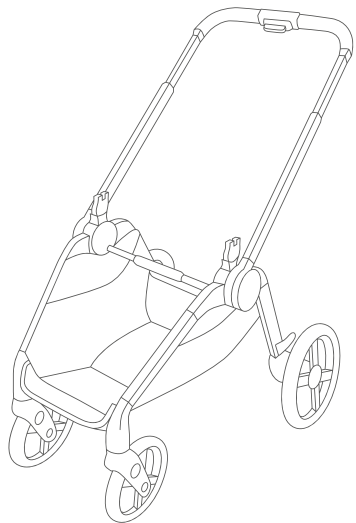


RECARO

CELONA











DE EN IT NL PL FR ES PT HU RO EL BR DA NO SV FI LT LV HR CS SK ET AR UK HE TR TH ID SL MS RU SR BG

DE – INHALT

	Vorbereitung	19
	Kompatibilität	21
	Kompaktes Falten	22
	Einstellen des Schiebegriffs	25
	Benutzung der Bremse	25
	Feststellen der Vorderräder	26
	Entfernen der Räder	27
	Verwendung mit Babyschale	28

EN – CONTENT

	Preparing	19
	Compatibility	21
	Compact fold	22
	Adjusting the handle	25
	Using the brake	25
	Using the swivel locks	26
	Removing the wheels	27
	Usage with infant car seat	28

IT – INDICE

	Preparazione	19
	Compatibilità	21
	Chiusura compatta	22
	Regolazione del maniglione	25
	Utilizzo del freno	25
	Blocco delle ruote anteriori	26
	Smontaggio delle ruote	27
	Utilizzo con ovetto neonato	28

NL – INHOUD

	Vorbereiding	19
	Compatibiliteit	21
	Compact vouwen	22
	Instellen van de schuifgreep	25
	Gebruik van de rem	25
	Vastzetten van de voorwielen	26
	Verwijderen van de wielen	27
	Gebruik met babyschaal	28

PL – SPIS TREŚCI

	Przygotowanie	19
	Kompatybilność	21
	Składanie kompaktowe	22
	Regulacja uchwytu do prowadzenia	25
	Korzystanie z hamulców	25
	Blokowanie kółek przednich	26
	Zdejmowanie kółek	27
	Stosowanie z fotelikiem dla niemowląt	28

FR – SOMMAIRE

	Préparatifs	19
	Compatibilité	21
	Pliage compact	22
	Réglage de la poignée	25
	Utilisation du frein	25
	Blocage des roues avant	26
	Retrait des roues	27
	Utilisation avec une coque pour bébé	28

ES – CONTENIDO

	Preparación	19
	Compatibilidad	21
	Plegado compacto	22
	Ajustar el manillar	25
	Cómo usar el freno	25
	Bloquear las ruedas delanteras	26
	Desmontar las ruedas	27
	Cómo usar el portabebés	28

PT – ÍNDICE

	Preparação	19
	Compatibilidade	21
	Sistema de dobragem compacto	22
	Ajuste da pega de transporte	24
	Utilização do travão	25
	Bloqueio das rodas dianteiras	26
	Remoção das rodas	27
	Utilização com a cadeira auto	28

HU – TARTALOM

	Előkészítés	19
	Kompatibilitás	21
	Kompakt hajtogatás	22
	A tolófogantyú beállítása	25
	A fék használata	25
	Az első kerekek rögzítése	26
	A kerekek eltávolítása	27
	Használat hordozóval	28

RO – CUPRINS

	Pregătirea	19
	Compatibilitate	21
	Plierea compactă	22
	Reglarea mânerului de împingere	25
	Utilizarea frânei	25
	Fixarea roților frontale	26
	Îndepărtarea roților	27
	Utilizarea cu scoica auto pentru bebeluși	28

EL – ΠΕΡΙΕΧΟΜΕΝΑ

BR – ÍNDICE

	Προετοιμασία	19
	Συμβατότητα	22
	Συμπαγές κλείσιμο	22
	Ρύθμιση της λαβής ώθησης	25
	Χρήση του φρένου	25
	Ασφάλιση των μπροστινών τροχών	26
	Αφαίρεση των τροχών	27
	Χρήση με το βρεφικό κάθισμα αυτοκινήτου	28

	Preparação	19
	Compatibilidade	22
	Sistema de dobramento compacto	22
	Ajuste da alça de transporte	25
	Uso do freio	25
	Bloqueio das rodas dianteiras	26
	Remoção das rodas	27
	Uso com a cadeira auto	28

DA – INDHOLD

	Forberedelse	19
	Kompatibilitet	21
	Kompakt sammenklapning	22
	Indstilling af skydegrebet	25
	Brug af bremsen	25
	Fastlåsning af forhjulene	26
	Fjernelse af hjulene	27
	Anvendelse med babystol	28

NO – INNHOLD

	Forberedelse	19
	Kompatibilitet	21
	Kompakt sammenlegging	22
	Justering av skyvehåndtaket	25
	Bruk av bremsen	25
	Festing av forhjulene	26
	Fjerning av hjulene	27
	Bruk med babyskål	28

SV – INNEHÅLL

FI – SISÄLTÖ

	Förberedelse	19
	Kompatibilitet	21
	Kompakt vikning	22
	Ställa in skjuthandtaget	25
	Använda bromsen	25
	Låsa framhjulen	26
	Ta bort hjulen	27
	Användning med babystol	28

	Valmistelu	19
	Yhteensopivuus	21
	Kokoontaittaminen	22
	Työntökahvan säätö	25
	Jarrun käyttö	25
	Etupyörien lukitus	26
	Pyörien irrottaminen	27
	Turvakaukalon käyttö	28

LT – TURINYS

	Paruošimas	19
	Suderinamumas	21
	Kompaktiška klostė	22
	Stūmimo rankenos nustatymas	25
	Stabdžio naudojimas	25
	Priekinių ratų užfiksavimas	26
	Ratų nuėmimas	27
	Vaikiško lopšio naudojimas	28

LV – SATURS

	Sagatavošanās	19
	Savietojamība	21
	Kompakta salocišana	22
	Ratu roktura regulēšana	25
	Bremžu lietošana	25
	Priekšējo riteņu bloķēšana	26
	Riteņu noņemšana	27
	Lietošana ar mazuļu kulbu	28

HR – SADRŽAJ

CS – OBSAH

	Priprema	19
	Kompatibilnost	21
	Kompaktno sklapanje	22
	Namještanje upravljačke ručke	25
	Korištenje kočnice	25
	Fiksiranje prednjih kotača	26
	Skidanje kotača	27
	Primjena s autosjedralicom za prijevoz novorođenčadi	28

	Příprava	19
	Kompatibilita	21
	Kompaktní složení	22
	Nastavení vodícího madla	25
	Používání brzdy	25
	Aretace předních kol	26
	Sejmutí kol	27
	Použití s dětským vajíčkem	28

SK – OBSAH

	Príprava	19
	Kompatibilita	21
	Kompaktné zloženie	22
	Nastavenie posuvnej rukoväti	25
	Používanie brzdy	25
	Zabrzdenie predných koliesok	26
	Demontáž koliesok	27
	Použitie dojčenskej škrupinky	28

ET – SISUKORD

	Ettevalmistus	19
	Vastavus	21
	Kompaktselt kokkupanek	22
	Sanga seadistamine	25
	Piduri kasutamine	25
	Esirataste fikseerimine	26
	Rataste eemaldamine	27
	Turvahälliga kasutamine	28

ع – المحتوى

UK – ЗМІСТ

	١٩	التجهيز
	٢١	التوافق
	٢٢	الطي المنمغ
	٢٥	ضبط مقبض التحريك
	٢٥	استخدام المكابح
	٢٦	تثبيت العجلات الأمامية
	٢٧	إزالة العجلات
	٢٨	الاستخدام مع استعمال مقعد الطفل

	19	Підготовка
	21	Сумісність
	22	Компактне складання
	25	Регулювання ручки візочка
	25	Використання гальма
	26	Фіксація передніх коліс
	27	Знімання коліс
	28	Використання з автолюлькою

HE - תוכן העניינים

	19	הכנה
	21	תאימות
	22	קיפול קומפקטי
	25	כונן ידית הדחיפה
	25	השימוש במעצורים
	26	נעילת הגלגלים הקדמיים
	27	הסרת הגלגלים
	28	השימוש במנשא לתינוק

TR – İÇİNDEKİLER

	19	Hazırlık
	21	Uyumluluk
	22	Kompakt katlama
	25	İtme kolunun ayarlanması
	25	Fren kullanımı
	26	Ön tekerlerin sabitlemesi
	27	Tekerlerin çıkartılması
	28	Bebek sepetiyle kullanım

ID – DAFTAR ISI

TH – สารบัญญ

	Persiapan	19
	Kompatibilitas	21
	Melipat ringkas	22
	Menyetel handel	25
	Menggunakan rem	25
	Menggunakan pengunci roda depan	26
	Melepaskan roda	27
	Penggunaan dengan baby carrier	28

	การจัดเตรียม	19
	ความเข้ากันได้	21
	พับขนาดกะทัดรัด	22
	การตั้งค่าตามจับสำหรับเลื่อน	25
	การใช้งานเบรก	25
	การใช้งานระบบล็อกล้อ	26
	การนำล้อออก	27
	การใช้งานกับที่นั่งเด็กอ่อน	28

SL – VSEBINA

	Priprava	19
	Združljivost	21
	Kompaktno zlaganje	22
	Nastavitev drsnega ročaja	25
	Uporaba zavore	25
	Fiksiranje sprednjih koles	26
	Odstranjevanje koles	27
	Uporaba z lupinico za dojenčka	28

MS – KANDUNGAN

	Persediaan	19
	Keserasian	21
	Lipat padat	22
	Menetapkan pemegang tekan	25
	Menggunakan brek	25
	Mengesan roda depan	26
	Mengeluarkan roda	27
	Gunakan dengan kerusi bayi	28

RU – СОДЕРЖАНИЕ

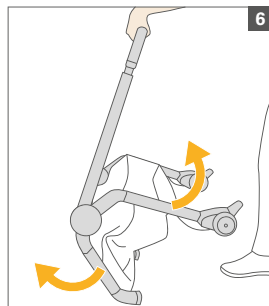
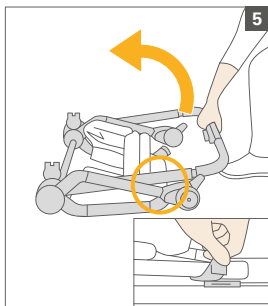
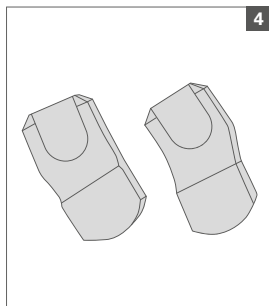
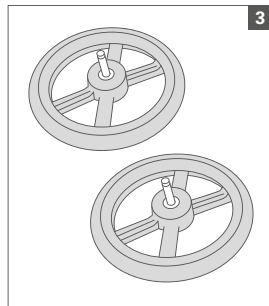
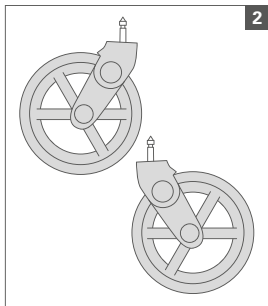
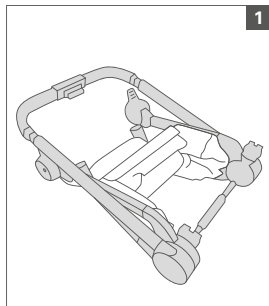
SR – SADRŽAJ

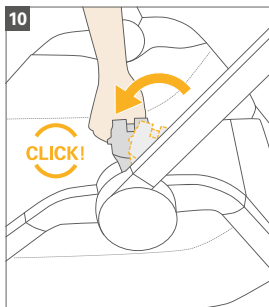
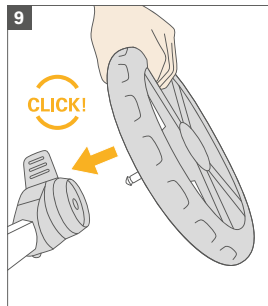
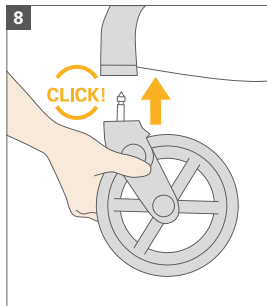
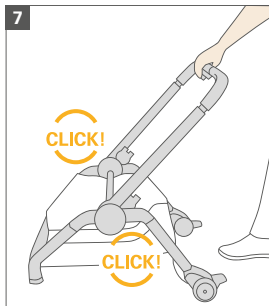
	Подготовка	19
	Совместимость	21
	Компактное складывание	22
	Регулировка ручки коляски	25
	Использование тормоза	25
	Блокировка передних колес	26
	Снятие колес	27
	Использование с автолюлькой	28

	Priprema	19
	Kompatibilnost	21
	Kompaktno sklapanje	22
	Podlašavanje upravljačke ručke	25
	Primena kočnice	25
	Fiksiranje prednjih točkova	26
	Skidanje točkova	27
	Upotreba sa autosedištem za prevoz novorođenčadi	28

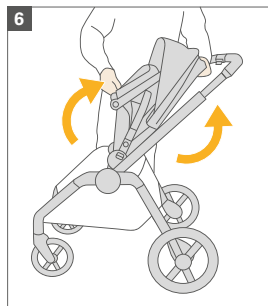
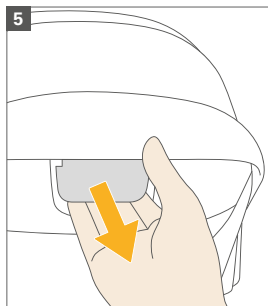
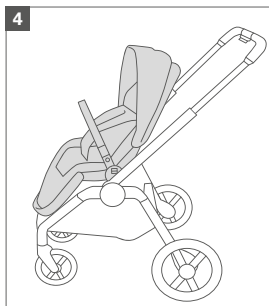
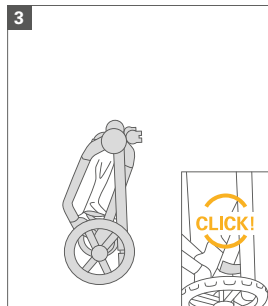
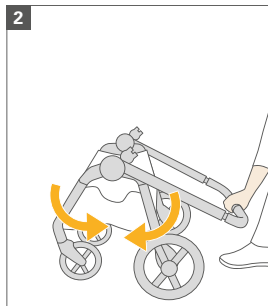
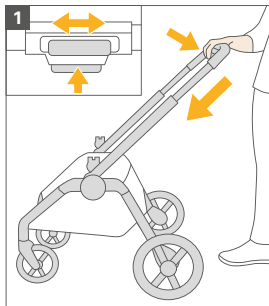
BG – СЪДЪРЖАНИЕ

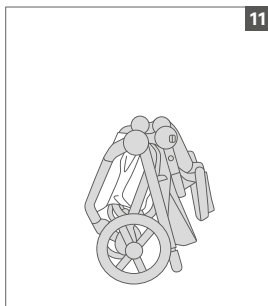
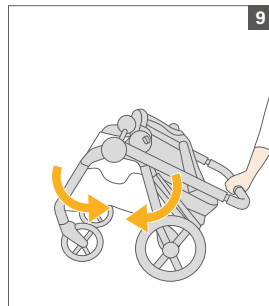
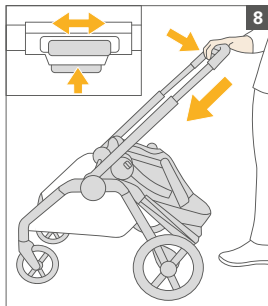
	Подготовка	19
	Съвместимост	21
	Компактно съгване	22
	Регулиране на дръжката	25
	Използване на спирачката	25
	Фиксиране на предните колела	26
	Сваляне на колелата	27
	Използване на бебешкото столче	28

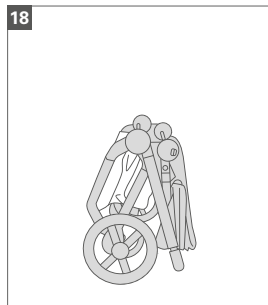
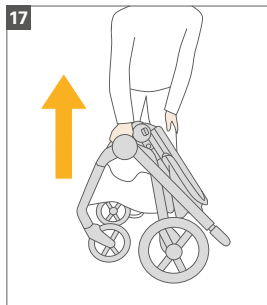
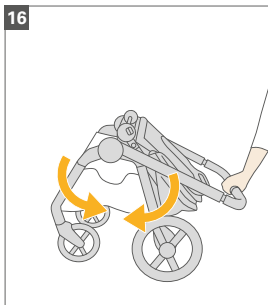
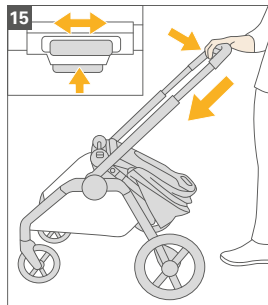


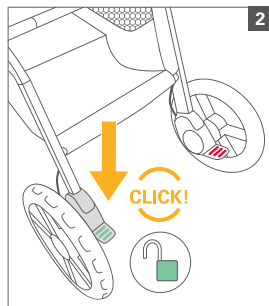
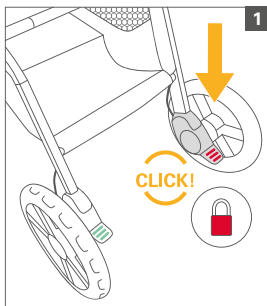
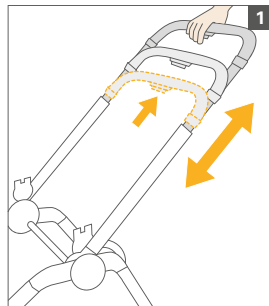


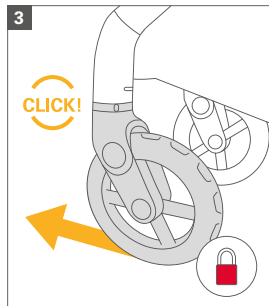
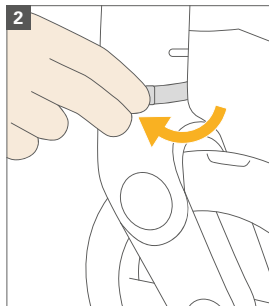
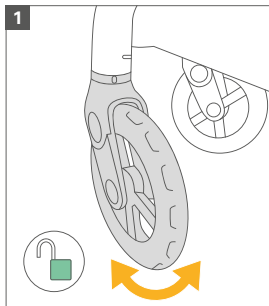


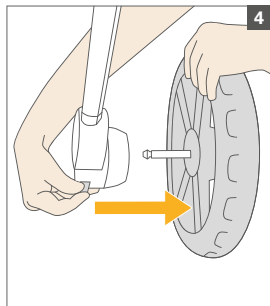
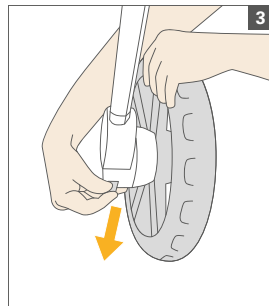
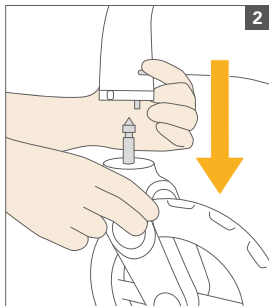
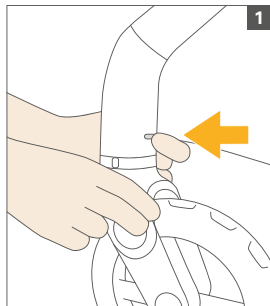


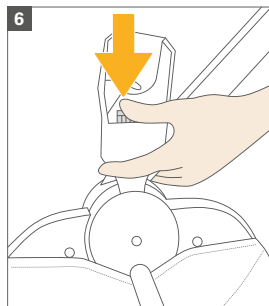
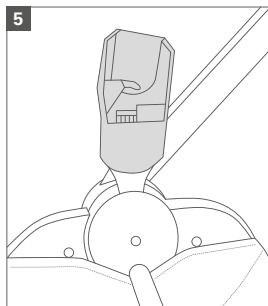
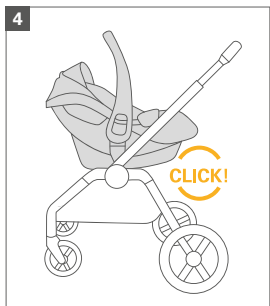
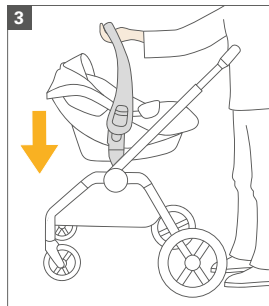
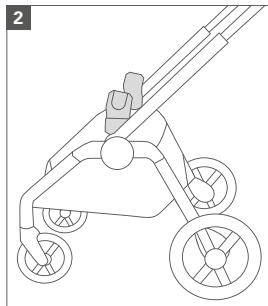
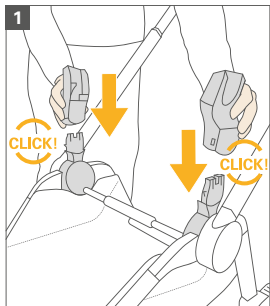


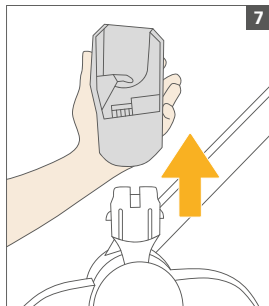












RECARO Kids s.r.l.
Via Niccolò Tommaseo, 68
35131 PADOVA (PD)
ITALY
Phone: +39 (0) 245467-740
Web: www.recaro-kids.com